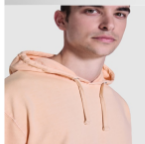


## KENIA SU2204



### DESCRIPTION

Unisex hooded sweatshirt in non-brushed cotton with a washed effect. Kangaroo pocket. 2x1 ribbed cuffs and waistband with elastane. Tone-on-tone flat drawstring with metal eyelets. Taped seams in matching fabric.

### COMPOSITION

100% cotton 250 gsm

### REMARKS

### SIZES

Adults:: XS · S · M · L · XL · 2XL · 3XL / :

### SCHEME



### QUANTITIES

Adults:

Box	Pack
30 un.	1 un.

### COLORS



### SIZES

Adults:	XS	S	M	L	XL	2XL	3XL
WIDTH (A)	51cm	54cm	57cm	60cm	63cm	66cm	69cm
LONG (B)	65cm	67cm	69cm	71cm	73cm	75cm	77cm

\*[Measured from the edge 1 cm below the sleeves / Measured from the highest point of the shoulder to the end of the garment]

